



# ANNUAL ENVIRONMENTAL AND SOCIAL GOVERNANCE REPORT

## 2023/24

**AMBITION  
DELIVERED  
TODAY**



Teesside  
University



Welcome to our Annual Environmental and Social Governance Report which, in keeping with our environmental aspirations, we are publishing online.

Please let us know if you have any feedback on this report, or if you need any additional information.

[tees.ac.uk/green](https://tees.ac.uk/green)



[EcoCampus](#) provides a structured framework to manage universities' sustainability performance in logical steps, in line with the international management system standard, ISO14001.

Teesside University is committed to retaining and improving our EcoCampus accreditation. The criteria for this prestigious award enables us to work in a consistent and pragmatic way towards ensuring that we manage our environmental obligations.

We are currently accredited at Gold level and we are committed to retaining this.

There are eleven areas considered within the EcoCampus management system and we have based this environmental report around these

## INTRODUCTION



**Dr Jo Heaton-Marriott**

Executive Director, Communications and Development and executive lead for ESG

During this year the University has made significant strides in embedding its commitment to environmental and social governance across core business operations.

The publication of a new statement on environmental, social, and governance (ESG) has provided a highly visible commitment, demonstrating to the university community that the work underway to address the UN Sustainable Development Goals is truly welcome.

A review of the University's performance in reducing emissions has also resulted in new targets and a series of proposed initiatives, including further staff and student engagement to support positive behaviour change.

And revisions to the TU Global strategy have ensured consideration of our ESG commitment, with thought given to ensuring sustainable partnerships and the environmental impact of our student mobility programmes.

The University held its first Community Hub conference, bringing together community partners to discuss and agree a shared mission to strengthen community resilience and deliver social impact. Whilst the Students' Union hosted an EcoShop, reducing local food waste and giving students access to an affordable option.

And we continue to support local community initiatives through our staff giving scheme, Be the Change.

Teesside University is proud to be a responsible and ethical employer which prioritises positive social impact. This report is a superb showcase of the significant work underway to deliver this commitment.

## CONTENTS

<b>3</b>	<b>Introduction</b>	<b>14</b>	<b>Environmental management systems</b>
<b>4</b>	<b>Sustainability in numbers</b>	<b>15</b>	<b>Pack for good campaign</b>
<b>6</b>	<b>Energy and water</b>	<b>16</b>	<b>Social responsibility</b>
<b>8</b>	<b>17 goals to transform our world</b>	<b>18</b>	<b>MIMA Middlesbrough Institute of Modern Art</b>
<b>10</b>	<b>Recycling and waste management</b>	<b>20</b>	<b>Sustainable travel and cycling</b>
<b>12</b>	<b>Sustainable construction</b>	<b>22</b>	<b>Sustainability in the curriculum</b>

## Health and safety

Teesside University produces an annual health, safety and well-being report which is published online, and can be viewed by staff, students, and members of the public.

# SUSTAINABILITY IN NUMBERS

## 100%

100% of electricity used by the University is from green sources

## 23

### NEW TREES

Planted as part of recent developments

A reduction of CO<sub>2</sub> emissions of

## 45.7%

against CO<sub>2</sub> peak emissions

### THE UNIVERSITY USED

13,038,557 KWH OF GAS

12,548,183 KWH OF ELECTRICITY

59,770 M<sup>3</sup> OF WATER

TOTAL SPEND ON UTILITIES

## £3,713,197

## 12,712

### CUBIC METRES

of water saved – enough to fill four Olympic-sized swimming pools

Donations of over **100 tonnes** to the British Heart Foundation, from staff and students. Diverted from landfill, equivalent of **11,000 kg** of Co<sub>2</sub> emissions and over **£70,000** raised for the BHF.

### TO HELP REDUCE PLASTIC WASTE

## OVER 80

drinking water refill locations are available across campus

## 80

### EXTERNAL

cycle parking spaces on campus

## 219

### COVERED

cycle parking spaces on campus

OVER 174 TONNES OF CARDBOARD, PAPER, PLASTIC AND METAL RECYCLED

### SIX SOLAR

PV arrays on campus generating a capacity of

## 150.64 KWP

MORE THAN 175 TONNES OF GLASS RECYCLED SINCE 2018



## ENERGY AND WATER

Our energy team produces a comprehensive energy report every month and annually. This is available to staff, students and the public on Green Tees.

### Carbon

The University achieved a reduction of CO<sub>2</sub> emissions of 45.7% against CO<sub>2</sub> peak emissions.

Since 2008 the University has progressively added water leak detection systems to all major buildings across the campus. Up until the end of the 2024 financial year the systems saved circa 12,700 cubic metres of water.

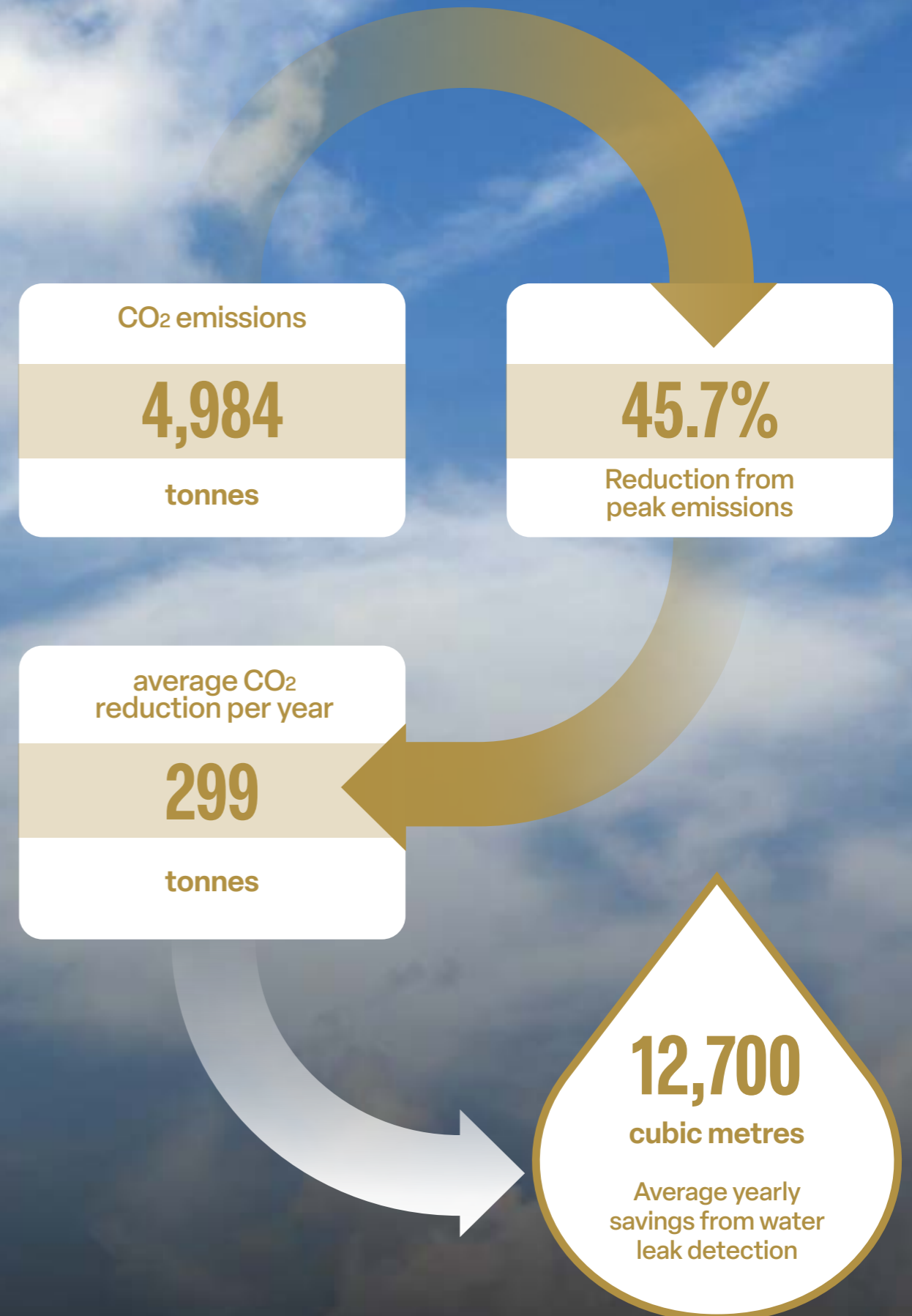
The water leakage systems have enabled the University to act upon and respond to water leaks in all manner of locations including faulty percussion taps, running taps and underground pipework leakage. A significant amount of water and budget has been saved. At an average of £2.57 per cubic meter over the period, an average of £34,995 per year has been saved.

### Energy monitoring

The aim of the University's monitoring and targeting (M&T) system is to provide a greater understanding of how energy and water is consumed across campus. In particular, it identifies if there are signs of avoidable waste and highlights opportunities to reduce consumption.

M&T can be used to quantify the savings achieved through implementation of energy saving projects and campaigns and provide feedback to inform staff awareness campaigns. It will also help to improve budget profiling and to support benchmarking exercises.

This will be further supported by the recent upgrade of the Building Management System which controls the majority of heating, cooling, and ventilation systems in campus buildings, alongside the phased introduction of a building analytics system.



# 17 GOALS TO TRANSFORM OUR WORLD

The Sustainable Development Goals (SDGs) are a call for action to secure the rights and well-being of everyone on a healthy, thriving planet. They are a collection of 17 global goals adopted by all United Nations Member States. They are designed to be a 'blueprint to achieve a better and more sustainable future for all'.

The SDGs recognise that ending poverty must go hand-in-hand with strategies that build economic growth and address a range of social needs including education, health, social protection, and job opportunities, while tackling climate change and environmental protection. Crucially they recognise that these actions must ensure that nobody is left behind.

## The SDGs give focus to the University's ESG activity.

- 1. Curriculum development:** integration of SDGs into academic programmes and courses to educate students about sustainability challenges and solutions. This can include dedicated courses or modules focused on specific goals.
- 2. Research initiatives:** investment in research themes that address the SDGs, encouraging students to engage in projects that tackle local and global sustainability issues.
- 3. Campus operations:** implementation of sustainable practices on campus, such as energy efficiency, waste reduction, and sustainable transportation to help reduce our impact on the local and wider environment.
- 4. Community engagement:** collaboration with local communities and organisations to address sustainability challenges.
- 5. Policy advocacy:** adoption and development of policies that align with the SDGs at local, national, and global levels, positioning the University as a leader in sustainability.
- 6. Awareness campaigns:** events, workshops, and campaigns to raise awareness of SDGs amongst the University and wider community.
- 7. Monitoring and reporting:** regular assessment and reporting on the University's progress towards achieving the SDGs and tracking of impact to inform future strategies.



# RECYCLING AND WASTE MANAGEMENT



**OVER 120 TONNES**  
OF CARDBOARD, PAPER, PLASTIC  
AND METAL RECYCLED

**OVER 29 TONNES**  
OF METAL RECYCLED



**ONE**  
RECYCLED  
**PLASTIC**  
**BOTTLE**

would save enough  
energy to power a  
60-watt light bulb for  
**THREE HOURS**

**MORE THAN**  
**175 TONNES**  
OF GLASS  
RECYCLED  
SINCE 2018

## What happens to recycling and waste generated at Teesside University?

Waste is segregated on site and disposed of in the waste streams (general, recycling, glass, food).

General waste is not sent to landfill. It is shredded and sent to Ferrybridge to be used as Refuse Derived Fuel in an energy from waste plant.

Dry mixed recycling is brought back to the transfer station and sorted into the commodities by a picking line.

All other waste stream – glass, metal, green waste – will go to Biffa’s transfer station to be sorted and recycled.

Plastics are segregated very specifically along with other specific materials which are sent to the following:

<b>Cardboard</b>	Riverdale Gateshead
<b>Mattresses</b>	Allensway in York
<b>WEEE</b>	Gap Gateshead
<b>General RDF</b>	Enfinium Ferrybridge

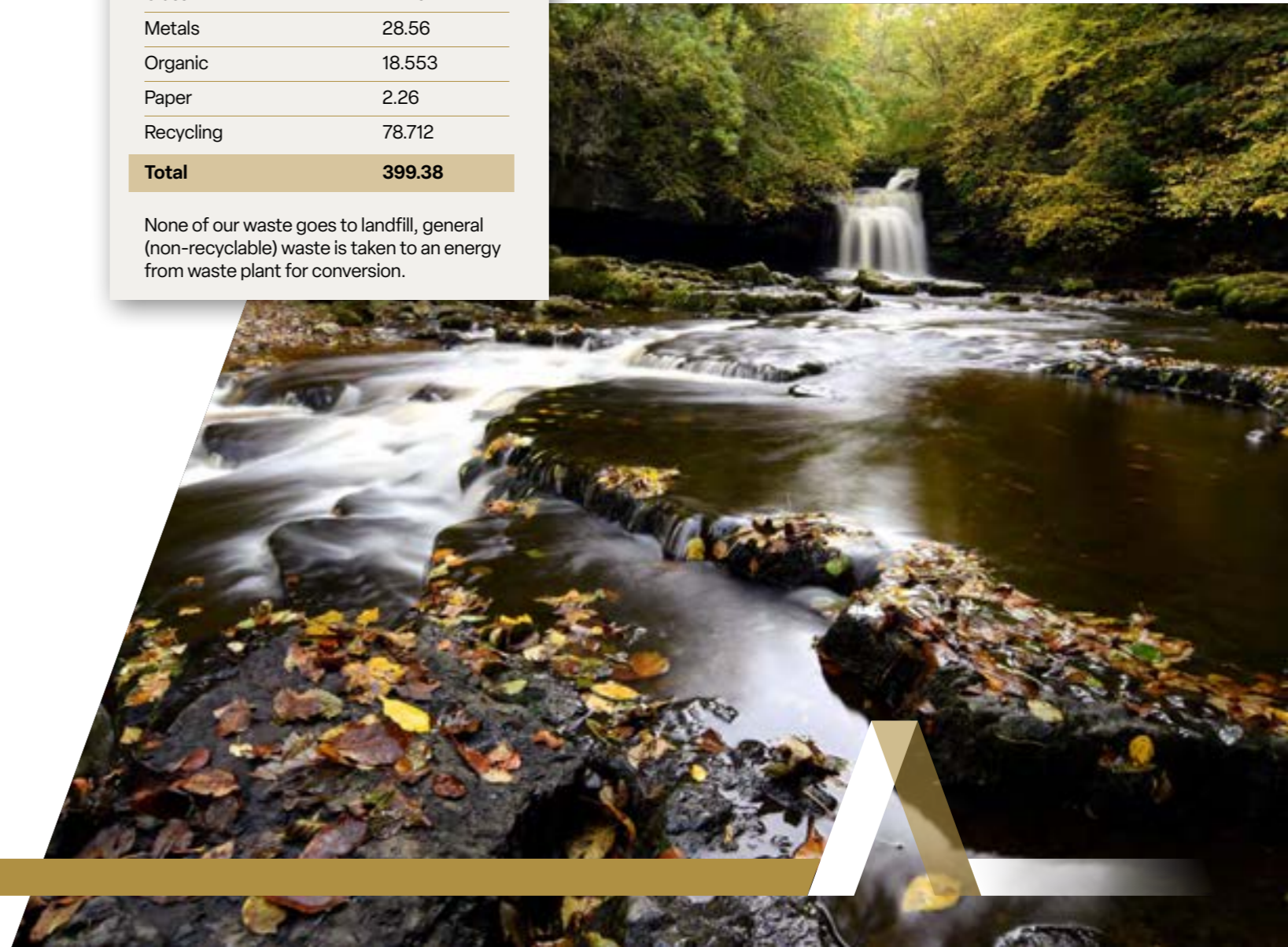
Recycling is processed through BIFFA’s Material Recovery Facility

<b>HDPE</b>	Biffa Polymers Redcar
<b>PET</b>	Biffa Polymers Seaham
<b>Metals</b>	EMR – Locations nationwide inc Hartlepool

## WASTE COMPOSITION

Waste type	Service weight
Electronics	3.54
General	243.005
Glass	24.75
Metals	28.56
Organic	18.553
Paper	2.26
Recycling	78.712
<b>Total</b>	<b>399.38</b>

None of our waste goes to landfill, general (non-recyclable) waste is taken to an energy from waste plant for conversion.



## SUSTAINABLE CONSTRUCTION

### BIOS

Completed in September 2023 and expanding our long-established School of Health & Life Sciences, Bios is our state-of-the-art £36.9m health and medical facility at the heart of our campus, offering high-quality, leading-edge laboratories for the sciences and clinical subjects including anatomy, pharmacy, microbiology, chemistry, Earth sciences and food sciences.

#### BIOS achieved BREEAM outstanding

BREEAM is an internationally recognised scheme used to specify and measure the sustainability performance of buildings, ensuring that projects meet sustainability goals and continue to perform optimally over time. A BREEAM assessment uses recognised measures of performance, which are set against established benchmarks, to evaluate a buildings specification, design, construction and use.

The measures used represent a broad range of categories and criteria from energy to ecology. Each category focuses on the most influential factors, including reduced carbon emissions, low impact design, adaption to climate change, ecological value and biodiversity protection. Integrating sustainability measures at the earliest possible stage of a project using the BREEAM framework enables reduced life cycle costs and increases in asset value, building user experience and health and CSR requirements and risk mitigation.



#### KEY ENVIRONMENTAL QUALITIES OF BIOS

- > BREEAM outstanding
- > Enhanced U values for the building fabric provides up to **71% enhancement** on building regulation standards
- > Building air tightness of **2.88(m<sup>3</sup>/hm<sup>2</sup>@50Pa)** compared to building regulation standards of 10.00(m<sup>3</sup>/hm<sup>2</sup>@50Pa)
- > Embodied carbon intensity of **698(kgCO<sub>2</sub>e/m<sup>2</sup>)** against a project target of 750(kgCO<sub>2</sub>e/m<sup>2</sup>)
- > 180m<sup>2</sup> of PV panels installed on the roof, capable of off-setting up to **16,000kg CO<sub>2</sub>** per annum
- > Building regulations Part L compliance, a **32% improvement** on the 'as built' BRUKL output indicates a building emission rate of 24.8kgCo<sub>2</sub>/m<sup>2</sup>per annum vs a target of 36.5kgCo<sub>2</sub>/m<sup>2</sup>
- > Heating /cooling air source heat pumps and recovery chiller with a seasonal co-efficient performance of 3.33, better than the industry average of 2.8
- > Energy efficient LED lighting (**SmartScan**) installed throughout
- > Water efficient sanitaryware
- > External services risers increase the useful footprint of the building and makes it more efficient with less embodied carbon
- > Significantly reduced energy demand on the ventilation systems with heat recovery used throughout



## ENVIRONMENTAL MANAGEMENT SYSTEMS

### EcoCampus

EcoCampus is a national environmental system award scheme for the higher education sector. The scheme allows Teesside University to be recognised for addressing key issues of environmental sustainability including carbon reduction. The University is currently accredited at gold level and we are committed to maintaining this and working towards platinum standard.

### Policy

Teesside University's [environmental policy](#) is overseen by the Environmental and Social Governance Oversight Board and is reviewed annually. It is published on our Green Tees website and is available to staff, students and the public.



## PACK FOR GOOD CAMPAIGN

### BRITISH HEART FOUNDATION AND TEESSIDE UNIVERSITY

**OVER  
£70,000  
TOTAL RAISED**  
from your fantastic donations

**OVER  
100 TONNES**  
diverted from landfill  
equivalent of over 11,000 kg  
of Co2 emissions.

**FUNDING  
LIFE-SAVING  
RESEARCH**  
into heart and circulatory  
diseases across the UK

### How your donations make a difference...

Heart transplants. Clot busting drugs. Pacemakers. Breakthroughs born from visionary medical research. Research you fund with your donations.

Heart and circulatory diseases kill 1 in 4 people in the UK. They cause heartbreak on every street. But if research can invent machines to restart hearts, fix arteries in newborn babies, build tiny devices to correct heartbeats, and give someone a heart they weren't born with – imagine what's next.

We fund research into all heart and circulatory diseases and their risk factors. Heart attacks, heart failure, stroke, vascular dementia, diabetes and many more. All connected, all under our microscope. Our research is the promise of future prevention, cures and treatments.

Partnering with us in our Pack for Good campaign enables our shops to receive a regular supply of donations during the summer period, a time typically, when donations can be lower than in other seasons. By joining our Reuse Revolution you're helping to save items from landfill, preventing unnecessary waste and carbon emissions being released into the atmosphere whilst also helping to fund research into new treatments for heart disease, stroke, vascular dementia and diabetes.





# SOCIAL RESPONSIBILITY

## Student Volunteering

Teesside University's Enterprise and Knowledge Exchange Strategy places a high priority on community engagement, fostering meaningful connections through collaboration and inclusion. Our flagship Volun-tees programme is a testament to this commitment, creating significant social value for both our students and the local community.

- > **5,387 hours** of volunteer service contributed to **73 local organisations** since September 2023
- > **£91,201.91** in social value created through student volunteering
- > **102 students recognised** for their dedication with Volun-Cheers awards, and a minimum of 50 hours volunteering

## Teesside University Law Clinic

Teesside University Law Clinic recognises the need for access to justice for all and offers pro bono legal advice to our community. We work in partnership with lawyers, charities, and voluntary organisations to provide students with real opportunities to practice skills in law.

The Clinic was a finalist in the Pro Bono Community Initiative Award category at the Northern Law Awards 2023. Building on this success they have recently launched the TU Law Clinic Court Support Service where students assist those without representation in family proceedings such as Middlesbrough Family Court.

- > **63** clients supported
- > **237** enquiries signposted to alternative service
- > **£168,000** in legal costs saved for clients

## Integrated Care Academy

The School of Health & Life Sciences hosts our Integrated Care Academy (ICA) providing clinical services to the University and wider community. The ICA was established to address the evolving demands of healthcare whilst training the next generation of skilled professions. Supervised by qualified professionals our student-led clinics offer a wide range of treatments including dental services, chiropractic, sports therapy and rehabilitation.

17 staff members oversee 237 student practitioners with a total of 10,336 appointment hours available to the community, and 7,600 patients have accessed the services. Many patients, after accessing one of the clinics, are now using more than one service, which aligns with our aim to provide holistic healthcare solutions while relieving pressure on the NHS.

In addition to this we are planning to launch our new optometry clinic next year.



## FA Girls' Emerging Talent Centre (ETC)

Building on England's triumph in the UEFA Women's Euro 2022 and the success of Teesside University graduate Beth Mead who took home the Golden Boot has ignited a wave of enthusiasm for women's football across the nation. The national success showcases the exception talent and dedication of athletes and serves as an inspiration for young women across the country.

Our partnership with the Football Association enables us to create pathways for young female athletes from all backgrounds from across the region providing they have the talent. With aims to produce female footballers of international level and has a track record of developing players who progress in the FA's talent development structure. Players benefit from FA qualified football coaching alongside a personalised programme for technical development and strength and conditioning, designed by experts at the University.

The recent growth of the sport has the potential to uplift socio-economically deprived areas providing opportunities for personal development, education and career pathways thereby creating positive impact for participants and their communities. Our support for this programme directly opens doors for girls across the region, regardless of their background. This commitment to inclusion is reflected in the fact that 11% of our participants come from the UK's most deprived postcodes, with over 30% participants from postcodes in from the lowest 50%.

The success of the ETC is evident in that three players have gone on to represent England at youth level. This demonstrates the effectiveness of the programme and that the sport has the unique capability of fostering civic pride within our community.

Contribution	Financial value	Social return on investment
The Football Association	£25,000	£97,750
Teesside University	£59,700	£233,427
Total combined contribution	£84,700	£333,177

## Eco-Shop

Teesside University successfully piloted an Eco-Shop in partnership with the Students' Union and Middlesbrough Environment City. The shop provided 85 students with 570kg of quality, surplus food for a small donation, effectively reducing food waste and creating an affordable food offer for students. This initiative showcases our commitment to social and environmental responsibility through collaborative efforts with our community partners. The positive response from stakeholders has led to plans for the Eco-Shop to have a weekly pop-up in the Students' Union for the next academic year, further re-enforcing our dedication to student well-being and sustainable practices.

- > **570kg** of surplus food redistributed.
- > **85 students** used the shop.

## Community Hub Conference

The inaugural Community Hub conference was held in October this year, bringing together community leaders and changemakers, primarily from the voluntary, community and social enterprise sector, with University researchers and engagement practitioners, to strengthen connections and catalyse collaboration.

Over 150 delegates were in attendance with sessions showcasing current collaboration between Teesside University and community partners with a focus on thematic discussion on future research, knowledge and exchange.



## MIMA MIDDLESBROUGH INSTITUTE OF MODERN ART

MIMA, Middlesbrough Institute of Modern Art connects art, people and ideas to empower creative lives and positively contribute to society. An international art gallery and accredited museum, MIMA commissions, collects and re-thinks modern and contemporary art, building and celebrating creativity.



### Environmental advocacy and environmental thematic

MIMA has narrated and explored the natural environment and advocated for environmental responsibility and justice through a series of major exhibitions and public engagement events since 2019. Through collaborations they build cross-disciplinary knowledge and in 2022-23 MIMA invited ethnobotanist Dr Greg Kenicer to share reflections on artworks from his position of expertise on plant life and the health of the planet through the Deep Horizons exhibition and a walking tour of botany in Middlesbrough.

### Supporting children and young people to engage with ecology

MIMA works with around nine thousand children and young people every year. Activities include free weekend and school holiday family programme, the Art Trolley, supporting children and their adults to engage with the natural world and understand the importance of biodiversity and climate responsibility.

### An artist and a planet podcast

MIMA's podcast series supports creative practitioners and Teesside University's research community to share research in relation to natural and built environments. Six episodes to date featured biologists, environmental scientists, designers and artists on topics including earth-friendly fashion; legacies of chemicals production; extinction, biodiversity and creativity and nature recovery.



## MIMA AND CLIMATE RESPONSIBILITY

### MIMA and Julie's Bicycle

MIMA closely monitors its environmental and carbon impact using the Julie's Bicycle programme which aims to reduce environmental impacts and drive action across the arts and culture sector. The Arts Council England 2020-30 Strategy, Let's Create, is built around four investment principles, including environmental responsibility.

MIMA foregrounds sustainability in all project planning and builds the impact of materials and their reuse into planning and designing processes for temporary display structures to reduce waste and use resources efficiently.

With funding from DCMS and Arts Council England, MIMA is working with partners across Middlesbrough to enhance its building for the future. Within this, plans are underway for a new pavilion within MIMA's garden which will support local communities, and students to engage with biodiversity and the natural world.

### Partnerships

MIMA is a key partner in Natural Futures: a pilot programme with Tees Valley Nature Partnership, Natural England and Borderlands.

### Borderlands

MIMA supports Borderlands, a Creative People and Places project for Middlesbrough and Redcar & Cleveland that aims to support more people to choose, create and take part in brilliant creative experiences. The environment is one of Borderlands' key themes, encouraging communities to build creative engagement with physical and natural environments.

## SUSTAINABLE TRAVEL AND CYCLING

The University offers a range of options to staff to assist with using sustainable methods of transport to travel to the University. These green travel initiatives, which continue to be popular with staff, not only help to reduce the University's carbon footprint but are also beneficial to staff from a wellbeing and cost saving perspective.

### CURRENTLY AROUND 50 STAFF ARE SIGNED UP TO THESE INITIATIVES

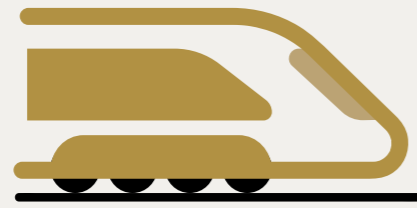
#### Cycle to work scheme

Since 2017, over 220 staff have obtained bicycles via this scheme.



#### Train season tickets

Since 2017, over 130 staff have purchased season tickets via the partnership scheme with Northern Rail and Teesside University.



#### Bus season tickets

Since 2017, over 130 staff have purchased bus season tickets via the University's dedicated loan scheme.



### Cycling at Teesside University

Following an extensive audit by cycling UK, Teesside University continues to hold the highest possible accreditation of gold standard, as a cycle friendly employer.

CFE-UK (cycle friendly employer accreditation) is awarded to organisations that have exemplary cycle-friendly facilities. With partners in nine European countries, CFE-UK enables measurement against the only international standard for workplace cycling.

Cycling UK has championed the cause of cycling for more than 140 years. They promote all forms of cycling, protect the interests of existing and would-be cyclists, and inspire people of all ages, backgrounds and abilities to discover the joys of cycling. As an independent, democratic and expert organisation, their activities reflect the commitment of members, volunteers and partners to make cycling mainstream, making a lasting difference to the lives of individuals and communities.

The University continues to make improvements to our facilities for student and staff cyclists. In recent months the Clarendon cycle store and shower facilities have undergone refurbishment to make them more attractive for users.

Find out more about the facilities available for staff and student cyclists on campus: [tees.ac.uk/cycling](https://tees.ac.uk/cycling).

### Green Car Lease

In 2023 Teesside University signed up to the Tusker car benefit scheme which offers eligible staff the opportunity to lease a brand new electric or plug in hybrid car for a fixed monthly amount, offsetting some of the employee's gross salary before tax. By offering financial savings to staff, the scheme makes sustainable, low carbon travel and commuting more accessible. 54 members of staff have signed up to the scheme, 91% of these cars are electric and 9% petrol hybrid.



## SUSTAINABILITY IN THE CURRICULUM

### ENVIRONMENT IN THE CURRICULUM

[BSc \(Hons\) Environmental Science](#)

[BSc \(Hons\) Environmental Science \(with Foundation Year\)](#)

[MSc Electrical Power and Energy Systems](#)

[MSc Electrical Power and Energy Systems \(with Advanced Practice\)](#)

[MSc Environmental Management](#)

[MSc Environmental Management \(with Advanced Practice\)](#)

### RESEARCH

In the academic year 2023/24 the University had dedicated funds totalling £2462,539 to environmental and sustainability research.

Over the same period the University has had in the region of 80 scholarly publications on environmental and sustainability published.

### UNIVERSITY OF INDONESIA GREENMETRIC WORLD UNIVERSITY RANKINGS 2023

For the seventh time Teesside University has taken part in the GreenMetric World University Rankings. It is the first and only university rankings in the world to measure each participating university's commitment in developing an environmentally friendly infrastructure. The rankings consider six indicators of each university (setting and infrastructure, energy and climate change, waste, water, transportation and education). This year 956 universities in 79 countries participated, compared to last year when 780 universities in 76 countries took part.

This year 1,182 universities in 84 countries participated, compared to last year when 1,050 universities in 85 countries took part.

Universities Indonesia (UI) released the result of the UI Green Metric World University Rankings 2023 in December 2023.

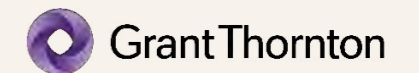
This year Teesside University are ranked 379th out of 1,182 worldwide institutions (4th in UK).

The new rankings will be published in December 2024.

The full results of the metric can be viewed here: <http://greenmetric.ui.ac.id>



### TEESSIDE UNIVERSITY AND GRANT THORNTON SUSTAINABILITY BUSINESS APPRENTICESHIP



Teesside University has partnered with leading business and financial adviser Grant Thornton UK LLP to launch a new apprenticeship to build sustainability business skills.

Designed for employees in sustainability roles, entrepreneurs interested in growing sustainable businesses and leaders who want to build their understanding of sustainability, the qualification gained is MSc Sustainability Business Specialist (Level 7 apprenticeship).

Through a combination of in-person and online learning, participants learn about sustainability principles and theories, leading sustainable organisations and how to apply sustainability across global operations, service innovation and finance.

Co-designed by Grant Thornton and Teesside University, the 18-month programme is rooted in real-world business experience and offers the opportunity to develop future-proof skills in sustainability leadership. The first cohort started in September.



This publication is available in alternative formats on request.  
Please contact marketing on [marketing@tees.ac.uk](mailto:marketing@tees.ac.uk).

---

**Teesside University**

Middlesbrough

Tees Valley

TS1 3BX UK

T: +44 (0) 1642 218121

[tees.ac.uk](http://tees.ac.uk)